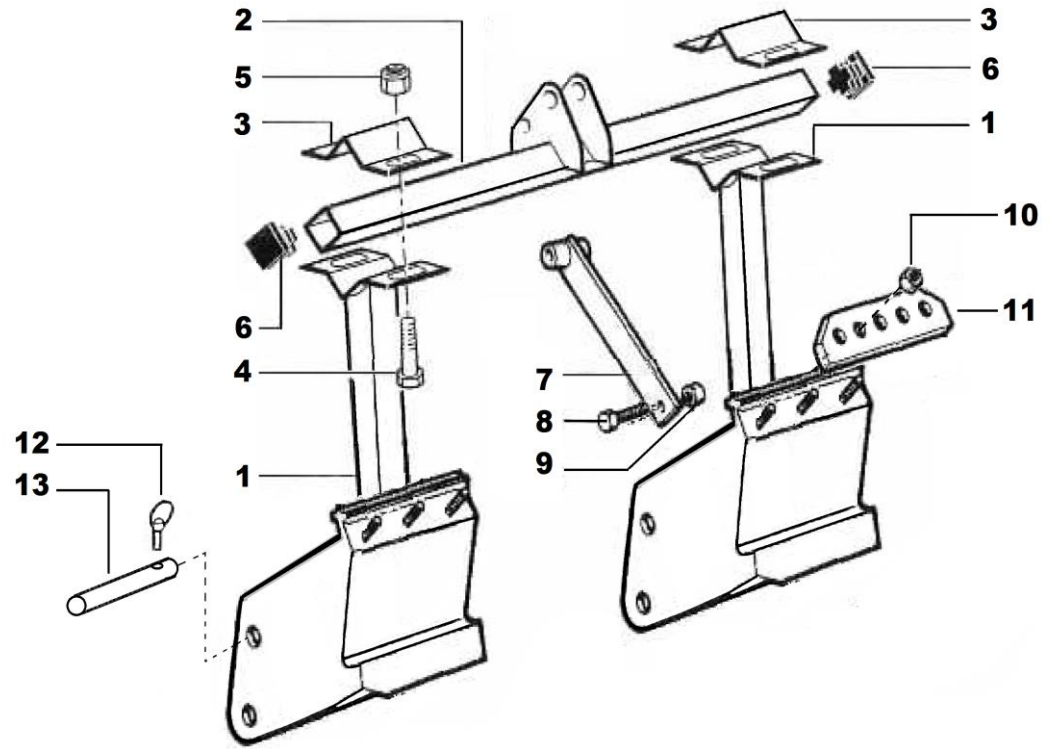
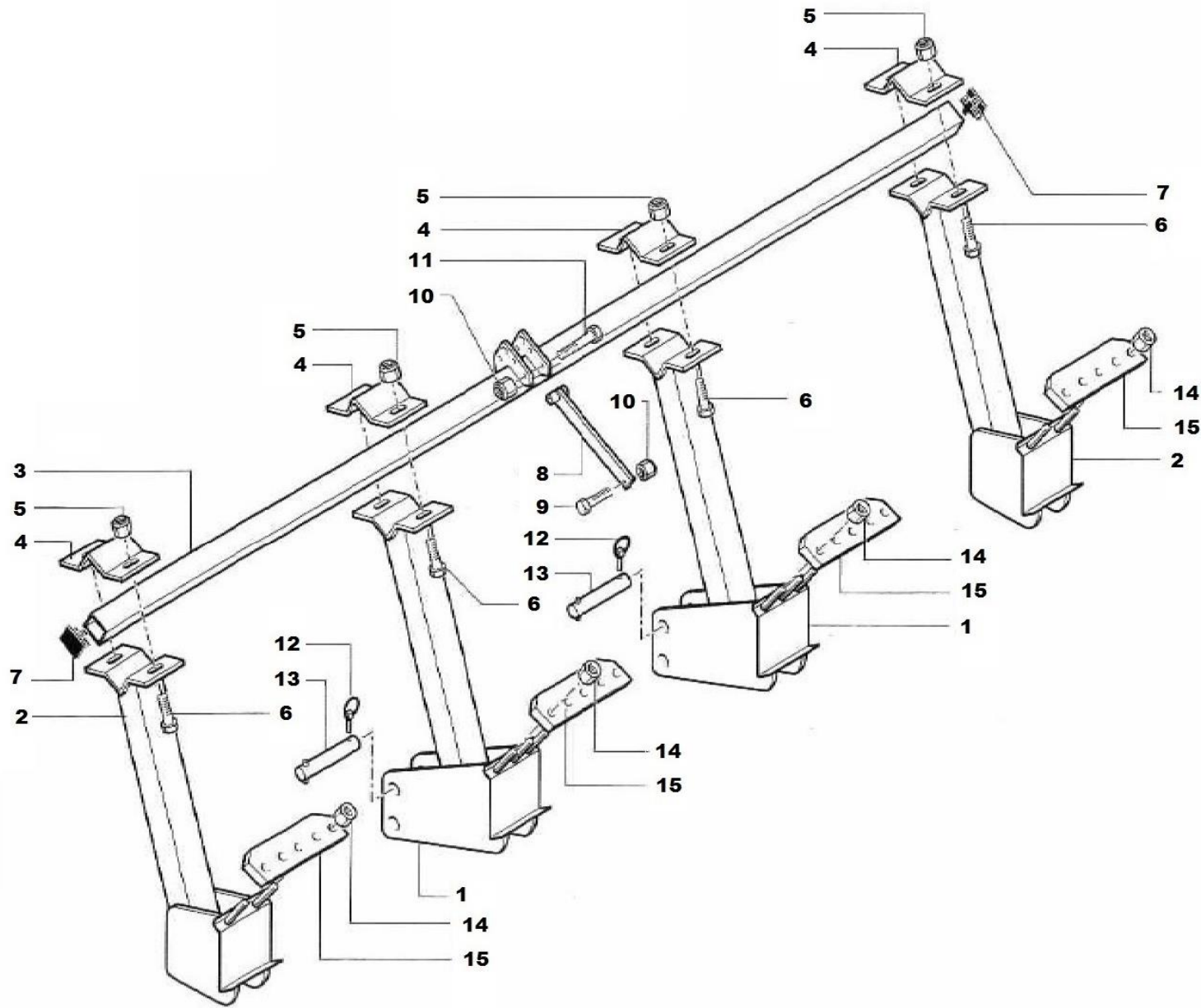


No	Part Number	Qty	Description
1	M420610060	2	Center Upright
2	M420610074	1	3-point Mini Top Tube
3	M350770012	2	Tube Clamp Plate
4	M103150128	4	Bolt M16 x 55 Plated
5	M103040072	4	M16 Locknut
6	M103120007	2	Tube Plug
7	M420680015	1	Tie Rod for Hitch
8	M103150098	1	Bolt M14 x 35 Plated
9	M103040070	1	M14 Locknut
10	M103040034	6	Nut M16 x 2.00
11	M330770006	2	5 Hole Clamp Plate
12	M101070002	2	Lynch Pin
13	M310560015	2	Hitch Pin Cat I



## FP 3-POINT HOOK UP

**90" FRAMES AND NARROWER**



**FP 3-POINT HOOK UP**  
*132" FRAMES AND WIDER*

# FP 3-POINT HOOK UP

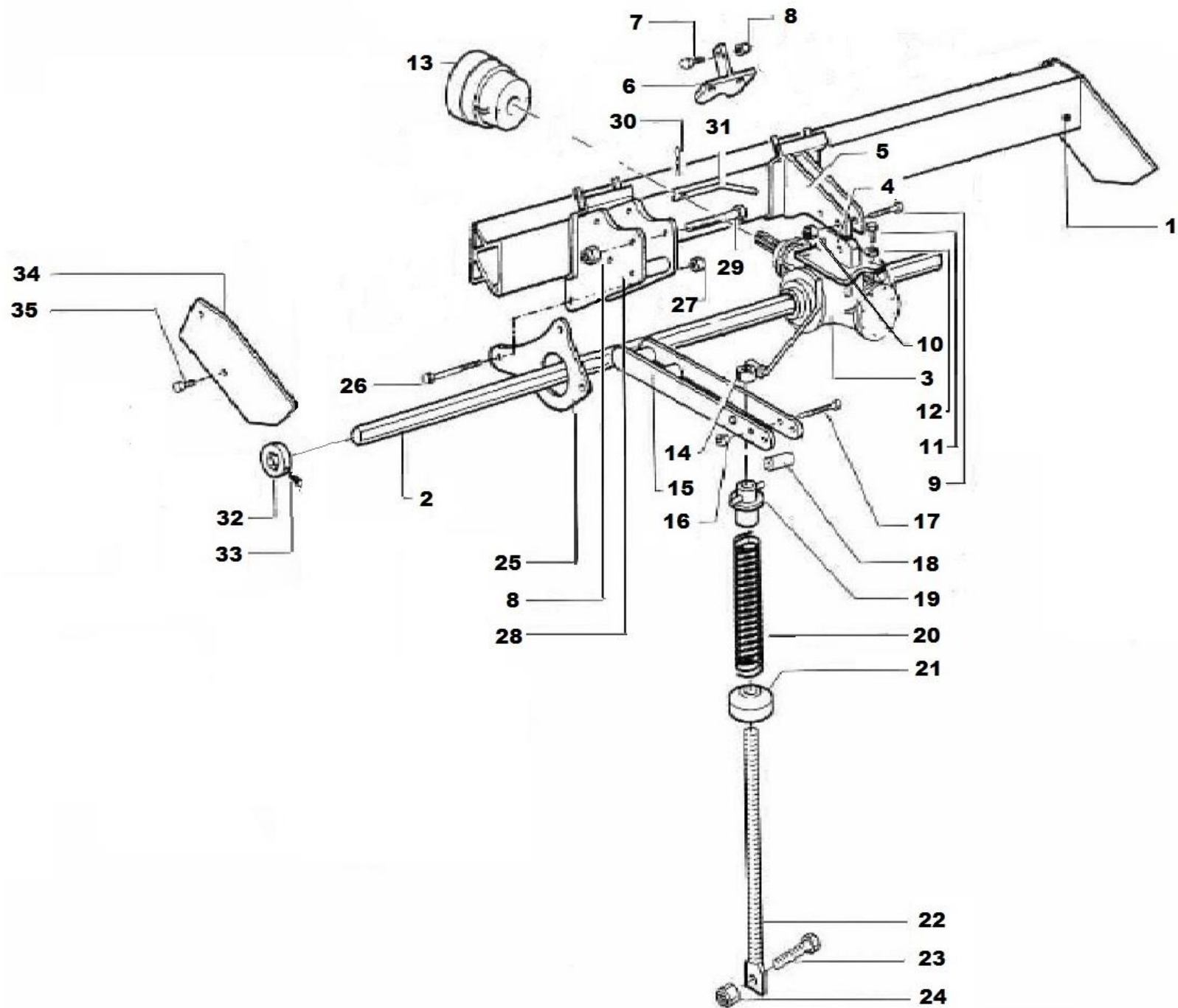
**132" FRAMES AND WIDER**

No	Part Number	Qty	Description
1	M420610060.01	2	Reinforced Center Upright
2	M420610059	2	Outer Upright
3	M420610061	1	3-Point Wide Top Tube
4	M350770012	4	Tube Clamp Plate
5	M103040072	8	M16 Locknut
6	M103150128	8	Bolt M16 x 55 Plated
7	M103120007	2	Tube Plug
8*	M420680015	1	Tie Rod for Hitch
	M420680046	1	Reinforced Tie Rod for Hitch
9	M103150098	1	Bolt M14 x 35 Plated
10	M103040070	2	M14 Locknut
11	M103150109	1	Bolt M14 x 100 Plated
12	M101070002	2	Lynch Pin
13	M320560016	2	Hitch Pin Cat II
14	M103040034	10	Nut M16 x 2.00
15	M330770006	2	5 Hole Clamp Plate

\*See picture below for details

132" Frame
180" – 192" Frame





**FP FRAME**

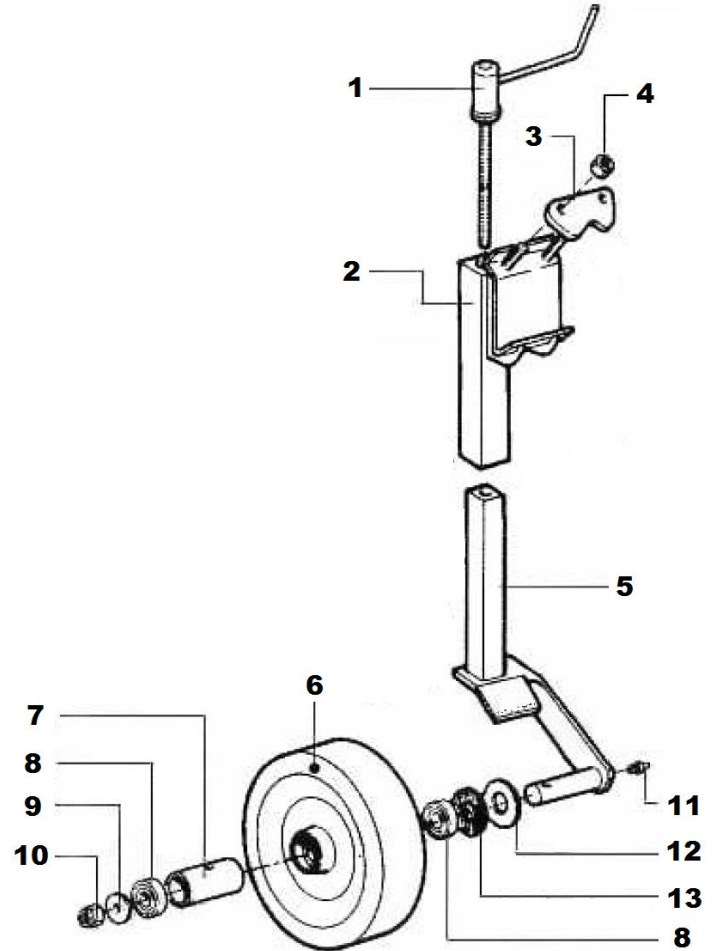
## FP FRAME

No	Part Number	Qty	Description
1	M420650009	1	66" Toolbar
	M420650011	1	90" Toolbar
	M420650128	(1)	90" Reinforced Toolbar (optional)
	M420650015	1	132" Toolbar
	M420650130	1	180" Toolbar
	M420650131	1	192" Toolbar
2	M320080019	1	66"; 41mm Hex Bar
	M320080021	1	90"; 41mm Hex Bar
	M320080023	1	132"; 41mm Hex Bar
	M320080025	1	180"; 41mm Hex Bar
	M320080038	1	192"; 41mm Hex Bar
3	M112050042	1	FP 41mm 540 RPM Gearbox; TB278C
4	M420610024	1	Lower Support Bracket
5	M420610007	1	Upper Gearbox Support Bracket
6	M420600002	1	T-Clamp Plate
7	M103150098	1	Bolt M14 x 35 Plated
8	M103040070	1 + X	M14 Locknut
9	M103150081	2	Bolt M12 x 60 Plated
10	M103040068	2	M12 Locknut
11	M103150120	4	Bolt M16 x 25 Plated
12	M103100040	4	M16 Shakeproof Washer
13	M101010002	1	PTO Guard at Gearbox
14	M520130002	X	Handle With Nut
15	M420090002	X	Support Arm
16	M103040014	X	M10 Nut
17	M103150055	X	Bolt M10 x 90 Plated
18	M320210006	X	Spacer
19	M420490002	X	Spring Guide
20	M320470002	X	Spring Coil
21	M420120002	X	Spring Collar
22	M320820004	X	Threaded Rod / FP
	M320820005	X	Threaded Rod / FPA
	M320820009	X	Threaded Rod / FPXA
23	M103150044	X	Bolt M10 x 30 Plated
24	M103040066	X	M10 Locknut
25	M320570022	X	Chaincase Mounting Plate
26	M103150135	X	Bolt M16 x 140 Plated
27	M103040034	X	M16 Nut x 2.00
28	M420040002	X	Head Stock
29	M103150112	X	Bolt M14 x 110
30	M101020002	X	Pin Clip
31	M320410002	X	Pin
32	M320020003	2	Locking Ring 41mm
33	M103150034	2	Bolt M10 x 20
34	M320620006	2	Guard Plate
35	M103150066	4	Bolt M12 x 20 Plated

<b>M520120025</b> Gearbox Mounting Kit	<b>M520210011</b> FP Gearbox with mounting kit
--	--

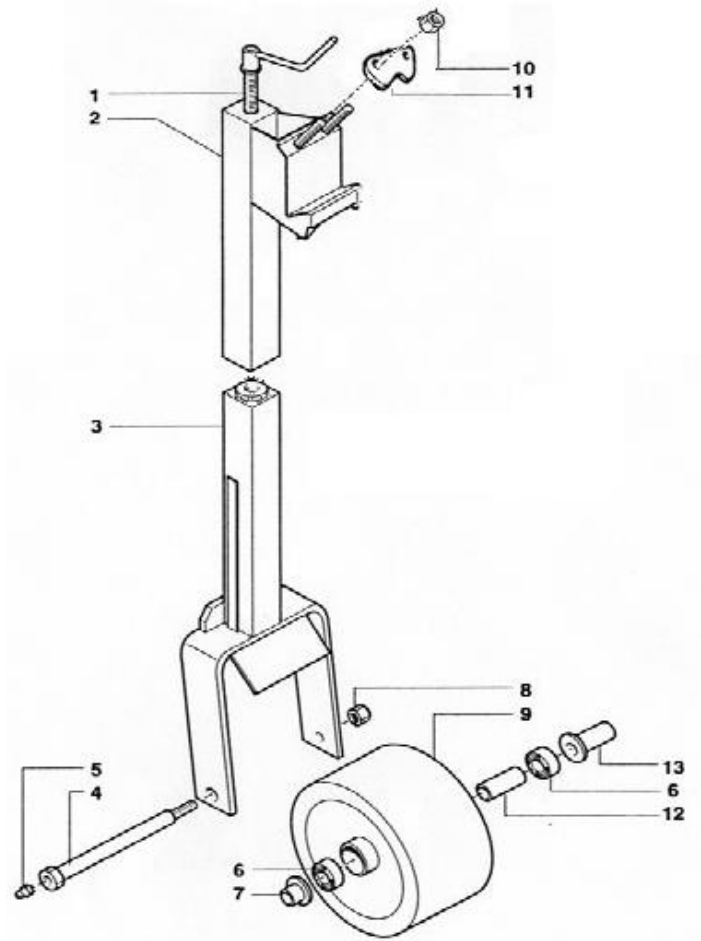
"X" is equal to the number of heads on the toolbar. So if there are 2 heads then X=2

No	Part Number	Qty	Description
1	M500130004	1	Screw with handle
2	M420610001	1	Upper Support   FP
	M420610030	1	Upper Support   FPA-FPXA
3	M320770004	1	Clamp Plate
4	M103040034	2	Nut M16 x 2.00
5	M420610011	1	Lower Support   FP
	M420610012	1	Lower Support   FPA-FPXA
6	M101050012	1	Wheel 320 x 90
7	M320210007	1	Spacer
8	M104010002	2	Bearing 6205Z
9	M320670005	1	Washer
10	M103040072	1	Locknut M16
11	M103090002	1	Zerk M8 x 1
12	M109010004	1	Washer
13	M109020004	1	Seal Felt



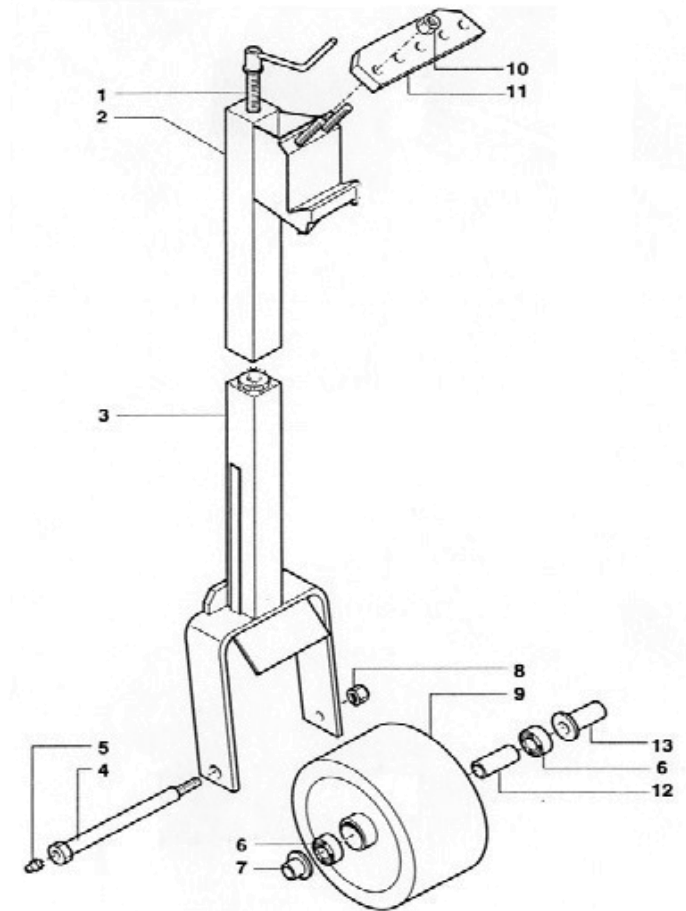
**FP – FPA – FPXA**  
**132" FRAMES AND NARROWER**  
**M520250006 – FP**  
**M520250007 – FPA – FPXA**

No	Part Number	Qty	Description
1	M500130004	1	Screw with handle
2	M420610086	1	Upper Support
3	M420610088	1	Lower Support
4	M320560030	1	Axle
5	M103090002	1	Grease Zerk
6	M104010002	2	Bearing 6205Z
7	M420220010	1	Spacer
8	M103040072	1	Locknut M16
9	M420520002	1	Steel Tire (HD)
10	M103040034	2	Nut M16
11	M320770004	1	Clamp plate
12	M320210007	1	Spacer
13	M420220009	1	Spacer



**FP**  
**180" FRAMES AND WIDER**  
**M520250014**

No	Part Number	Qty	Description
1	M520130005	1	Screw with handle
2	M420610087	1	Upper support
3	M420610089	1	Lower support
4	M320560030	1	Axle
5	M103090002	1	Grease zerk
6	M104010002	2	Bearing 6205Z
7	M420220010	1	Spacer
8	M103040072	1	Locknut M16
9	M420520002	1	Steel Tire (HD)
10	M103040034	2	Nut M16
11	M330770006	1	5 Hole Clamp plate
12	M320210007	1	Spacer
13	M420220009	1	Spacer

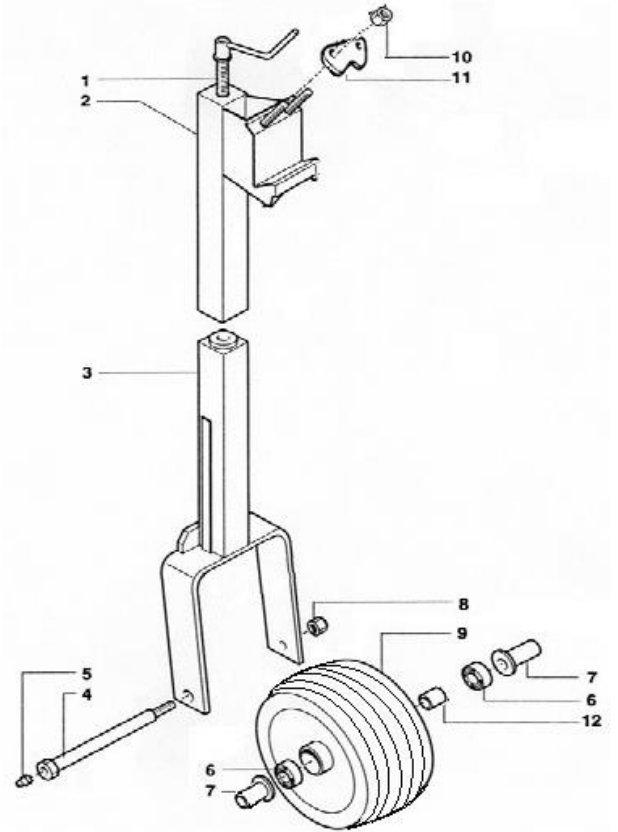


**FPA – FPXA**  
**180" FRAMES AND WIDER**  
**M520250015**



No	Part Number	Qty	Description
1	M500130004	1	Screw with handle FP
	M520130005	1	Screw with handle FPA / FPXA
2	M420610086	1	Upper Support FP
	M420610087	1	Upper Support FPA / FPXA
3	M420610088.01	1	Lower Support FP
	M420610088.02	1	Lower Support FPA / FPXA
4	M320560030	1	Axle
5	M103090002	1	Grease zerk
6	S600602	2	Bearing 6205-RS
7	M420220009	2	Spacer
8	M103040072	1	Locknut M16
9	M101050013	1	Rubber Tire
10	M103040034	2	Nut M16
11	M320770004	1	2 Hole Clamp Plate FP
	M330770006*	1	5 Hole Clamp Plate FPA / FPXA
12	S200415	1	Spacer

\*NOT SHOWN

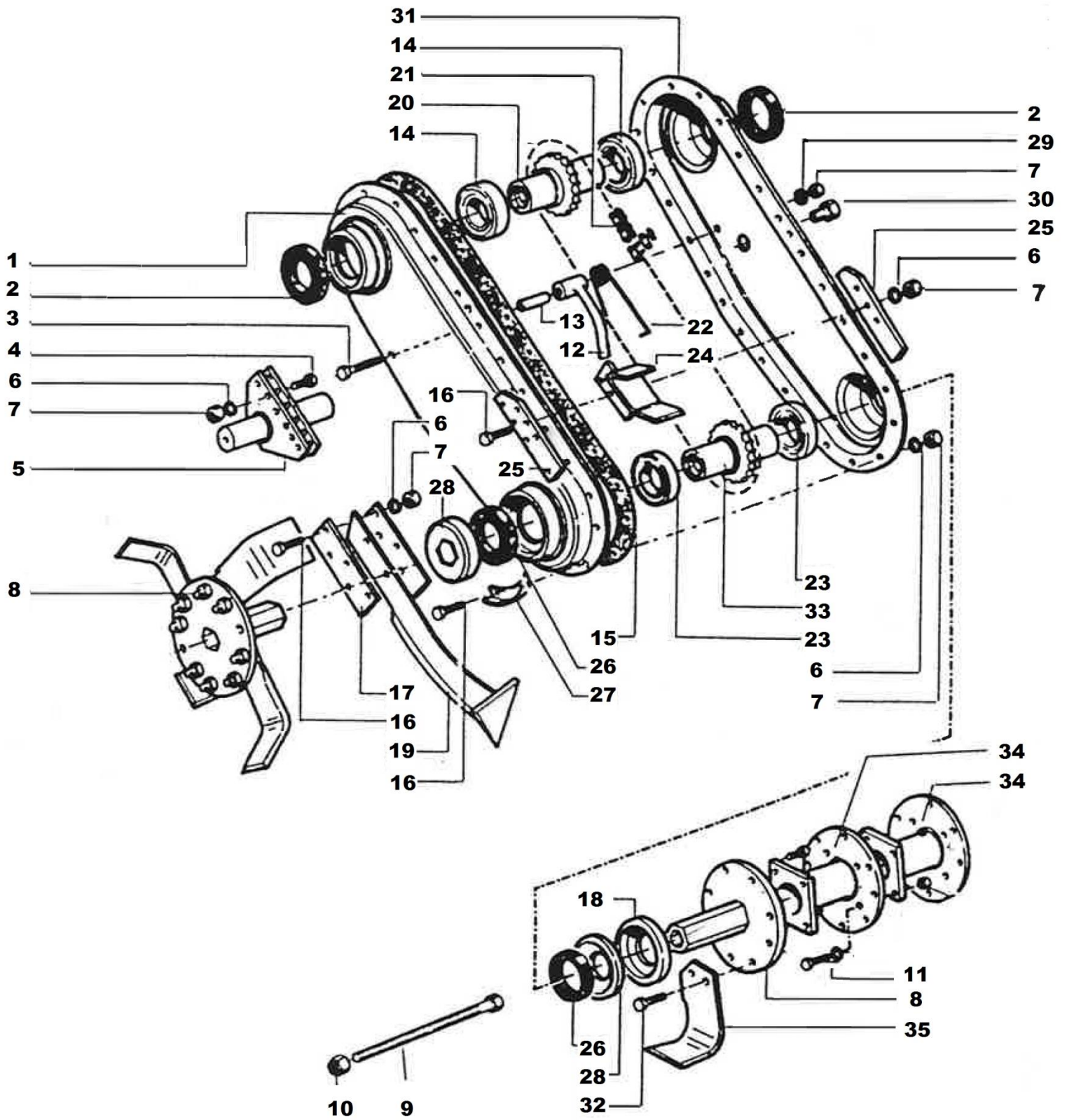


## FP – FPA – FPXA PNEUMATIC

ALL FRAME WIDTHS

**M520250014.01 – FP**

**M520250014.02 – FPA – FPXA**



**FP CHAINCASE ASSEMBLY**

## FP CHAINCASE ASSEMBLY

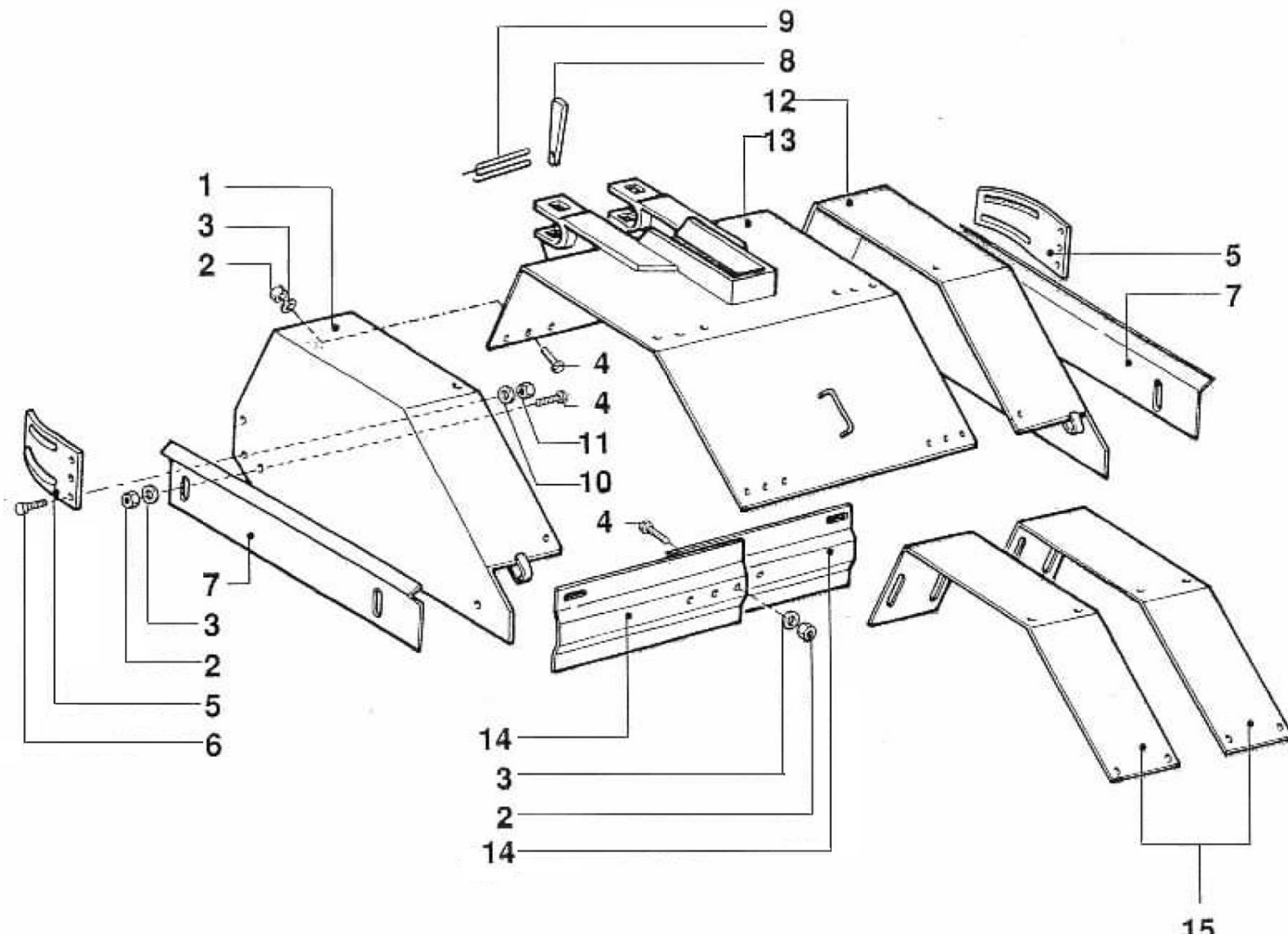
No	Part Number	Qty	Description
1	M420554005	1	Chaincase Half; Left / FP
	M420554006	1	Chaincase Half; Left / FPA
	M420554007	1	Chaincase Half; Left / FPXA
2	M109040010	2	Oilseal 80 x 55 x 10
3	M103140034	1	Bolt M8 x 70
4	M103140026	10	Bolt M8 x 30
5	M420610008	1	Front Shield Support / FP
	M420610034	1	Front Shield Support / FPA / FPXA
6	M103100020	20	Lock Washer M8
7	M103040064	23	Locknut M8
8	M420370003	1	Drive Flange for FP Heads 9"-11"
	M420370004	1	Drive Flange for Standard FP Heads
9	M420680002	1	Rotor Drawbolt for 9"-11" FP Heads
	M420680001	1	Rotor Drawbolt for Standard FP Heads
10	M103040078	1	Locknut M20 x 1.5
11	M111558	4 * X	Flange Bolt Assembly
12	M420660004	1	Chainskid Tensioner FP
	M420660005	1	Chainskid Tensioner FPA / FPXA
13	M320090009	1	Chainskid Bushing
14	M104010014	2	Bearing 6011
15	M320330003	1	Chaincase Gasket FP
	M320330004	1	Chaincase Gasket FPA
	M320330005	1	Chaincase Gasket FPXA
16	M103140026	8	Bolt M8 x 30
17	M320580001	2	Depthskid Plate
18	M320210027	2	Rotor Spacer
19	M420590002	1	Depth Skid FP
20	M320600005	1	Top Sprocket 41mm
21	M112020018.01	1	Chain 1" X 52 Pitch
	M112020020.01	1	Chain 1" X 64 Pitch
	M112020020.01	1	Chain 1" X 74 Pitch
22	M320470008	1	Spring for Chainskid Tensioner
23	M104010010	2	Bearing 6201
24	M420030002	1	Rear Shield Support FP
25	M320580002	1	Plate for Rear Shield Support

No	Part Number	Qty	Description
26	M109040008	2	Oilseal 80 x 50 x 1
27	M320620050	2	Chaincase Skid Protector
28	M320550003	2	Rotor Dust Cover FP
29	M103100006	1	Washer M8 Plated
30	M320800001	1	Fill Plug / Breather
31	M420552005	1	Chaincase Half; Right / FP
	M420552006	1	Chaincase Half; Right / FPA
	M420552007	1	Chaincase Half; Right / FPXA
32	M111604	16 + (8 * X)	Blade Bolt Assembly
33	M320600004	1	Bottom Sprocket 36mm
34	M420220002	X	Outer Flange 4" Standard FP
	M420220001	X	Outer Flange 3" (Optional)
35	M111183-R	4 + (2 * X)	Standard FP Blade Right Hand
	M111183-L	4 + (2 * X)	Standard FP Blade Left Hand
	M111241-R		Long FP Blade Right Hand (Optional)
	M111241-L		Long FP Blade Left Hand (Optional)

M520040006	Drive Case Assembly FP
M520040009	Drive Case Assembly FPA
M520040010	Drive Case Assembly FPXA

Head Assemblies with Shields and Blades		
9"-11"	M520070117	FP Head Assembly with Shields and Blades
	M520070199	FPA Head Assembly with Shields and Blades
12"-16"	M520070118	FP Head Assembly with Shields and Blades
	M520070200	FPA Head Assembly with Shields and Blades
18"-22"	M520070123	FPXA Head Assembly with Shields and Blades
	M520070119	FP Head Assembly with Shields and Blades
	M520070201	FPA Head Assembly with Shields and Blades
24"-32"	M520070124	FPXA Head Assembly with Shields and Blades
	M520070121	FP Head Assembly with Shields and Blades
	M520070203	FPA Head Assembly with Shields and Blades
	M520070126	FPXA Head Assembly with Shields and Blades

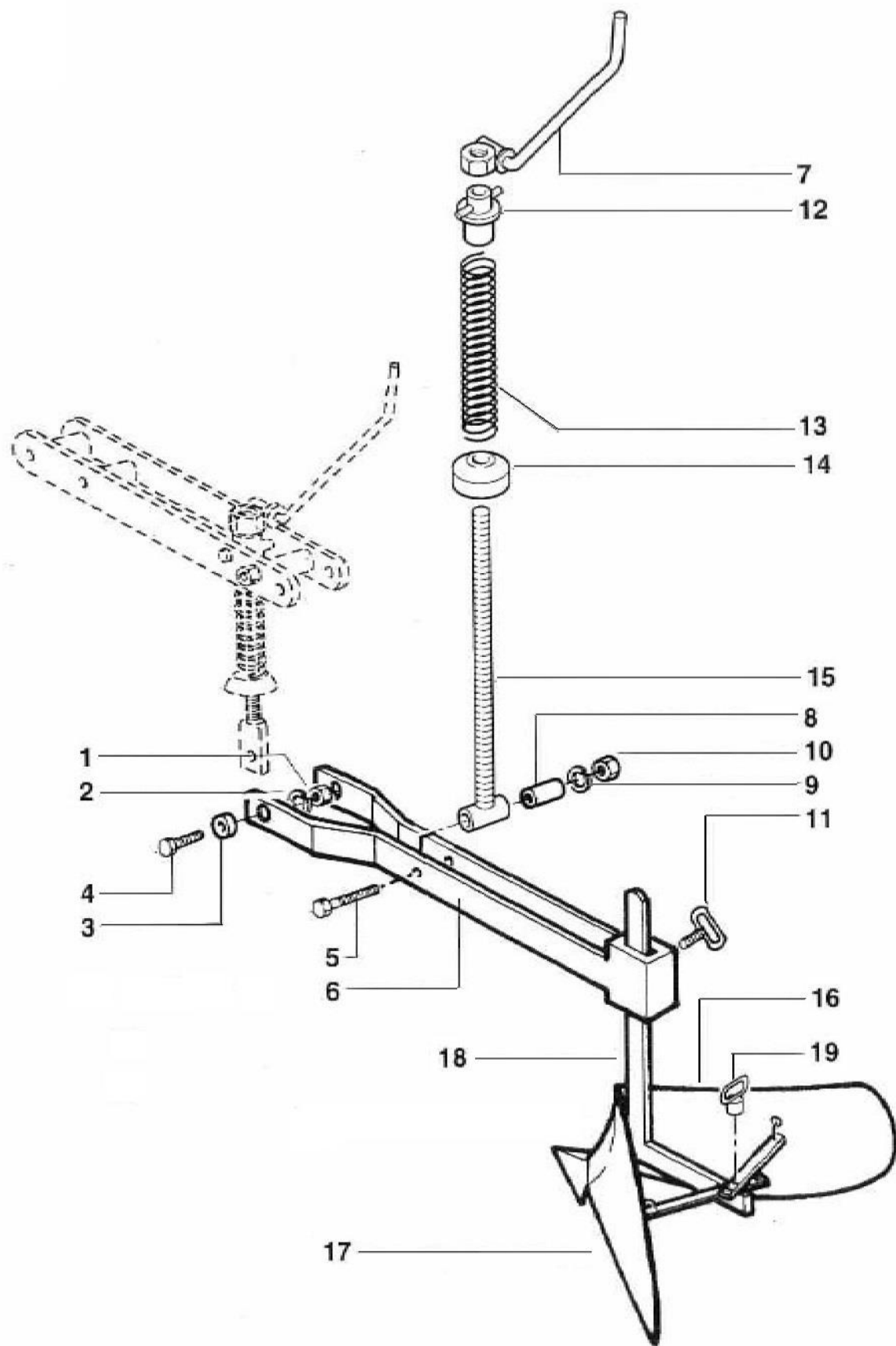
"X" is equal to the number of Outer Flanges (M420220002). So with one outer flange on either side, X = 2.



**FP SHIELD ASSEMBLY**

<b>FP SHIELD ASSEMBLY</b>			
No	Part Number	Qty	Description
1	M520164004	1	Left Narrow Side Shield Assembly (2.5" Wide)
	M520164005	1	Left Medium Side Shield Assembly (4.5" Wide)
	M520164006	1	Left Wide Side Shield Assembly (6.5" Wide)
2	M103040014	11	Nut M10
3	M103100008	11	Washer M10
4	M103150034	11	Bolt M10 x 20 Plated
5	M300620001	2	Plant Guard
6	M103150005	4	Bolt M8 x 16 Plated
7	M320620016	2	Side Shield Protector
8	M300740001	2	Wedge Pin
9	M300470018	2	Spring Wire Clip
10	M103100006	4	Washer M8 Plated
11	M103040008	4	Nut M8
12	M520162004	1	Right Narrow Side Shield Assembly (2.5" Wide)
	M520162005	1	Right Medium Side Shield Assembly (4.5" Wide)
	M520162006	1	Right Wide Side Shield Assembly (6.5" Wide)
13	M420160004	1	Center Shield for 9"-11" Heads (7- $\frac{3}{4}$ " Wide)
	M420160005	1	Center Shield for 12"-16" Heads (9- $\frac{3}{4}$ " Wide)
	M420160006	1	Center Shield for 18"-22" Heads (15- $\frac{3}{4}$ " Wide)
	M420160007	1	Center Shield for 24"-32" Heads (21- $\frac{3}{4}$ " Wide)
14	M320624034	2	Half Trailing Board 9"-11" Heads (6- $\frac{1}{4}$ " Wide)
	M320624036	2	Half Trailing Board 12"-16" Heads (8- $\frac{3}{4}$ " Wide)
	M320624038	2	Half Trailing Board 18"-22" Heads (11- $\frac{3}{4}$ " Wide)
	M320624040	2	Half Trailing Board 24"-32" Heads (16- $\frac{5}{8}$ " Wide)
15	M320070003	1	Extension Shield for Heads > 32"; (optional)

M520050007	1	Shield Set Complete for 9"- 11" Heads	Contains everything above <i>except</i> for Extension Shields
M520050008	1	Shield Set Complete for 12"-16" Heads	
M520050009	1	Shield Set Complete for 18"-22" Heads	
M520050010	1	Shield Set Complete for 24"-32" Heads	

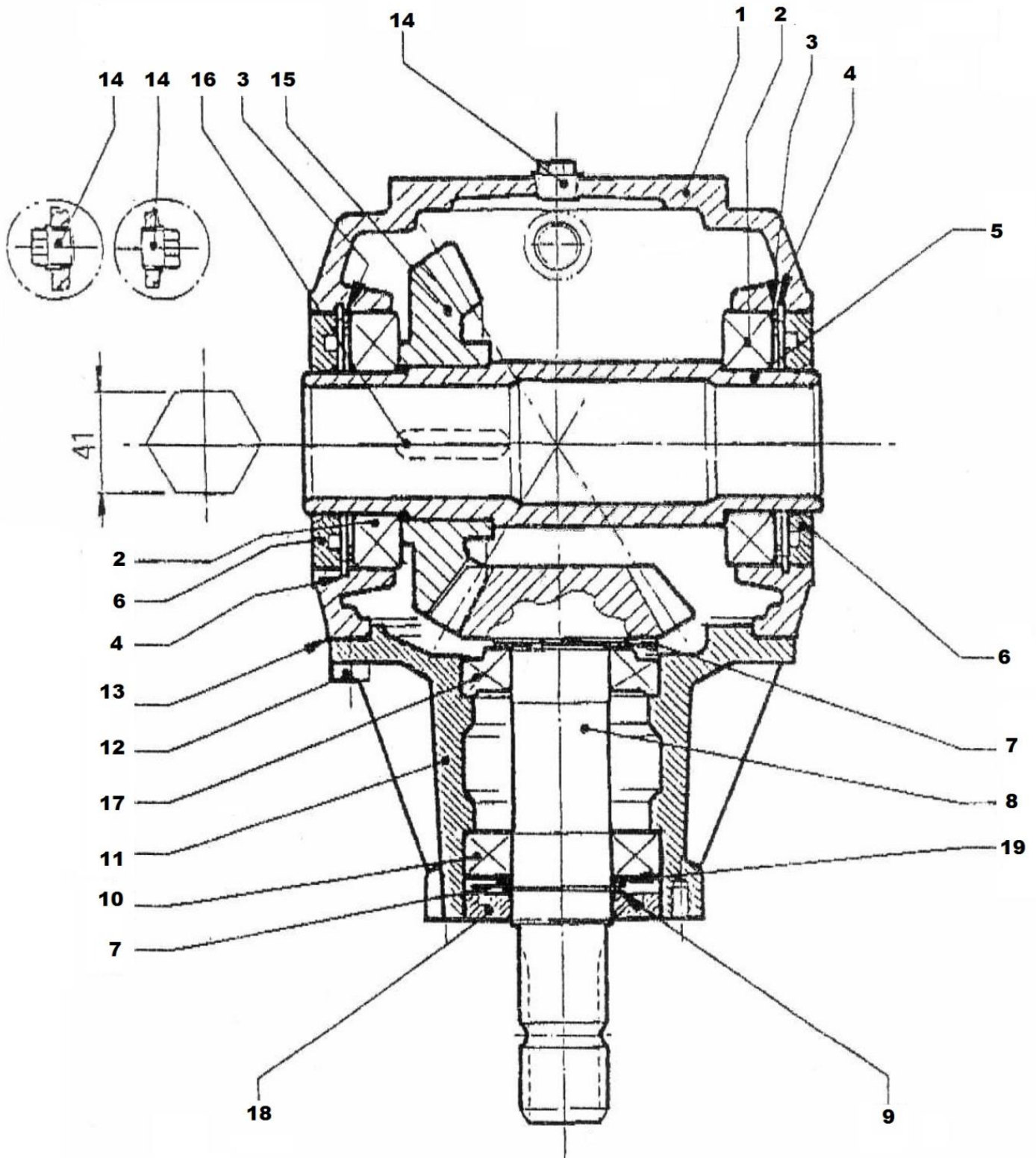


**FP RIDGER ASSEMBLY**

<b>FP RIDGER ASSEMBLY</b>			
<b>No</b>	<b>Part Number</b>	<b>Qty</b>	<b>Description</b>
1	M103040022	2	Nut M10
2	M103100010	2	Washer M10
3	M330090002	2	Bushing
4	M103150072	2	Bolt M12 x 35 x 1.75 Plated
5	M103150090	1	Bolt M12 x 90 x 1.75 Plated
6	M440090006	1	Ridger Bracket Arm / FP
	M440090007	1	Ridger Bracket Arm / FPA
	M440090008	1	Ridger Bracket Arm / FPXA
7	M520130002	1	Handle with Nut
8	M320210012	1	Spacer
9	M103100010	1	Washer M12
10	M103040022	1	Nut M10
11	M440270001	1	Ridger Bolt
12	M420490002	1	Spring Guide / FP
13	M320470002	1	Spring Coil / FP
14	M420120002	1	Spring Collar / FP
15	M440680003	1	Threaded Rod / FP
	M440680004	1	Threaded Rod / FPA – FPXA
16	M430022001	1	Right Wing
17	M430024001	1	Left Wing
18	M440340001	1	Center Support
19	M440270002	1	Ridger Nut
	M330590001	1	Weld On Point
	M330030001	1	Weld on Wear Strip
	M330040026	2	Pin for Ridger Spade

Not Shown	<b>M500230001</b> Ridger Spade
--------------	-----------------------------------

M540230005	Ridger Assembly / FP	Contains everything shown above
M540230006	Ridger Assembly / FPA	
M540230007	Ridger Assembly / FPXA	

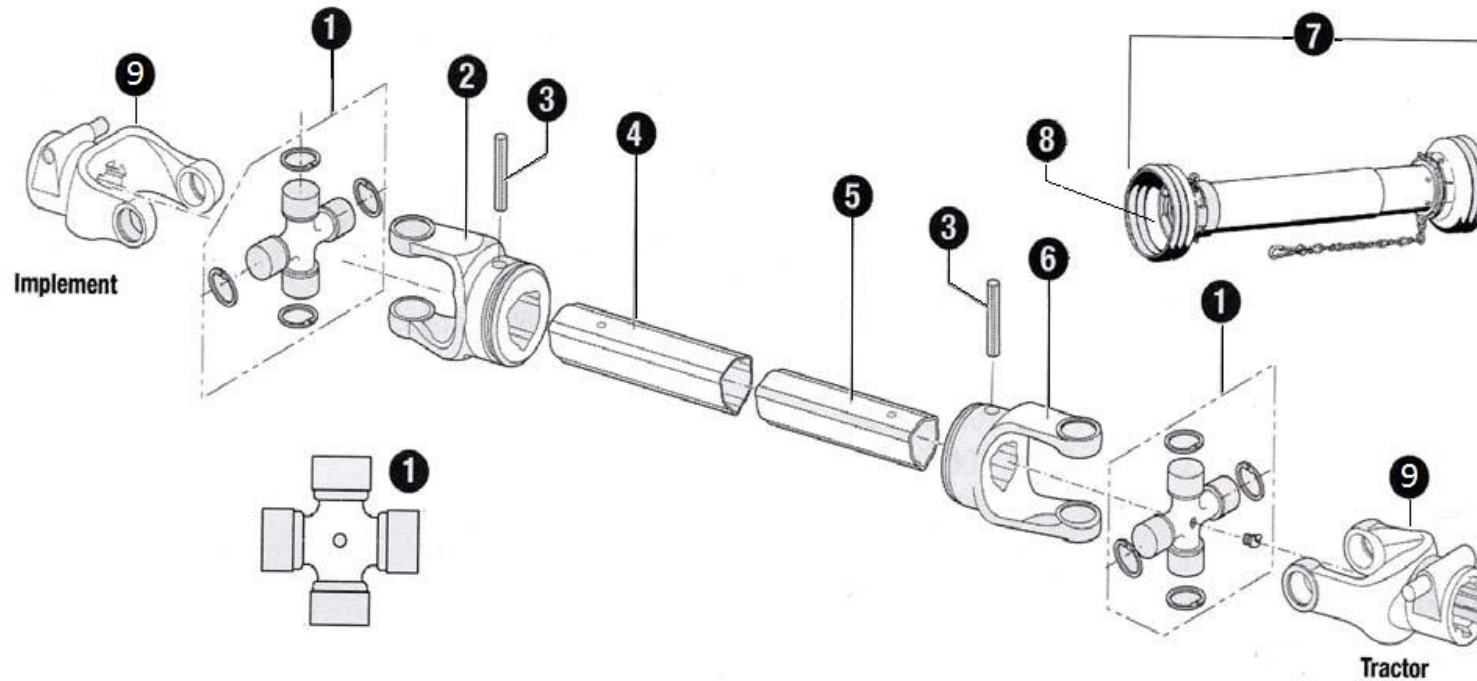


**FP GEARBOX**



## FP GEARBOX

No	Part Number	Qty	Description
1	M0278030100	1	Gear Case
2	M80100199	2	Bearing 6011
3	M07037500	2	Shim
4	M85200123	2	Internal Snapring 100mm
5	M02783004	1	Sleeve
6	M87101055	2	Oilseal 100 x 55 x 10
7	M0244750300	2	Shim
8	M02785000	1	Input Shaft
9	M85100029	1	Internal Snapring 40mm
10	M80100871	1	Bearing 6208
11	M02781300	1	Front Housing
12	M81100061	8	Bolt M10 x 25
13	M02487200	1	Front Cover Gasket
14	M86500006	3	3/8" Plug
15	M02786000	1	Crownwheel 28 Teeth
16	M84101134	1	Key 10 x 8 x 40
17	M80900024	1	Bearing 30208
18	M87300027	1	Oilseal 80 x 40 x 10



## PTO SHAFT ASSEMBLY

No	Part Number	Qty	Description
1	200-8692	2	Cross and bearing kit
2	700-6654	1	Yoke-outer tube
3	508-1040	2	Roll pin
4	600-6654	1	Outer tube
5	400-6545	1	Inner tube
6	300-6645	1	Yoke-inner tube
7	902-3548	1	Complete PTO guard
8	961-3567	1	Guard Bearing Kit
9	102-8606*	2	Yoke 540 RPM
	560-8606†	1	Slip Clutch†

14106654	PTO Assembly with Slip Clutch	Contains everything listed above
----------	-------------------------------	----------------------------------

\*Replaceable with 807-8606 (clamp yoke) for Implement end only

† Cannot order individual parts; Order entire clutch